

**REPORT TO THE BOARD OF PORT COMMISSIONERS  
MAY 2010**

SUBJECT: REPORTS REQUIRED UNDER THE PROVISIONS OF THE MASTER POLICY

REPORT	NO ACTION	ATTACHED
Month to Month Leases Executed	X	
Lease Bond, Rental Insurance Deviations	X	
Work Contracts (over \$5,000) Executed	X	
Change Orders Authorized	X	
Work by Port Crews or Day Labor (over \$5,000)	X	
Claims Settled (under \$1,000)	X	
Professional & Consulting Services Awarded and Architectural, Engineering & Technical Services Awarded	X	
Travel Approved within WA, OR, and Vancouver or Victoria B.C.		X
Uncollectible Accounts Written Off	X	
Experts Engaged for Litigation	X	
Tariff Adjustments	X	
Quarterly Treasurer Investment Reports (April, July, October, January)	X	

Jeff Robb  
Executive Director

**TRAVEL APPROVED BY THE EXECUTIVE DIRECTOR**  
**(In Accordance with Master Policy)**  
**MAY 2010**

STAFF PERSON	LOCATION OF MTG.	DATE(S)	PURPOSE
Doug Sandau	Richland	5/5-6-7	WAMA Conference
Jeff Robb	Tacoma	5/7	Gordon Thomas Honeywell – Harbor Works
Dave Hagiwara	Olympia/Everett	5/11-12	Aquatic Lands - DNR Reid Middleton - ACTI
Jeff Robb	Lake Chelan	5/11-12-13	WPPA Conference
Pat Deja	Burlington	5/14	Hexcel Composites - Marketing
Dave Hagiwara	Seattle	5/21	Sea Run Consulting MC Squared – Black Ball
Jesse Waknitz	Everett	5/26	DOE – Boat Yard Storm Water
Dave Hagiwara	Everett	5/26	DOE – Boat Yard Storm Water

**REPORT TO THE BOARD OF PORT COMMISSIONERS  
LOG HANDLING AND MARINE TERMINAL OPERATIONS**

**MAY 2010**

**Log Handling**

	<b>MTD 2010</b>	<b>YTD 2010</b>	<b>YTD 2009</b>
<b>Log Operation:</b>			
Dumped Loads	301	1,414	191
Decked Loads	307	1,786	120
<b>T-7 Container Operations*</b>			
# Containers Loaded	3	105	760
<b>T-7/T-5 Log Operation-Discharge (Inbound/DeWater)</b>			
# of Barges	0	0	0
# Barge Loads-Offload	0	0	0
# DeWater Loads - R/RB	0	0	101
<b>TOTAL LOADS</b>	<b>611</b>	<b>3,305</b>	<b>1,172</b>

\* Ops commenced 8/19/08

**Terminals #1 & #3**

	<b>MTD 2010</b>	<b>YTD 2010</b>	<b>YTD 2009</b>
<b>Terminal Activity</b>			
Repair Vessels – Tanker	2	9	11
Repair Vessels – Other+	6	10	4
Cargo Vessels * Log Ship	3	5	1
Other	17	53	70
<b>TOTAL # VESSELS</b>	<b>28</b>	<b>76</b>	<b>86</b>
<b>TOTAL # DOCK DAYS</b>	<b>87</b>	<b>248</b>	<b>205</b>

\* Includes passenger vessels

**Terminal #7**

	<b>MTD 2010</b>	<b>YTD 2010</b>	<b>YTD 2009</b>
<b>Terminal Activity</b>			
<b>TOTAL # VESSELS @ Berth</b>	<b>2</b>	<b>22</b>	<b>0</b>
<b>TOTAL # DOCK DAYS</b>	<b>2</b>	<b>22</b>	<b>0</b>

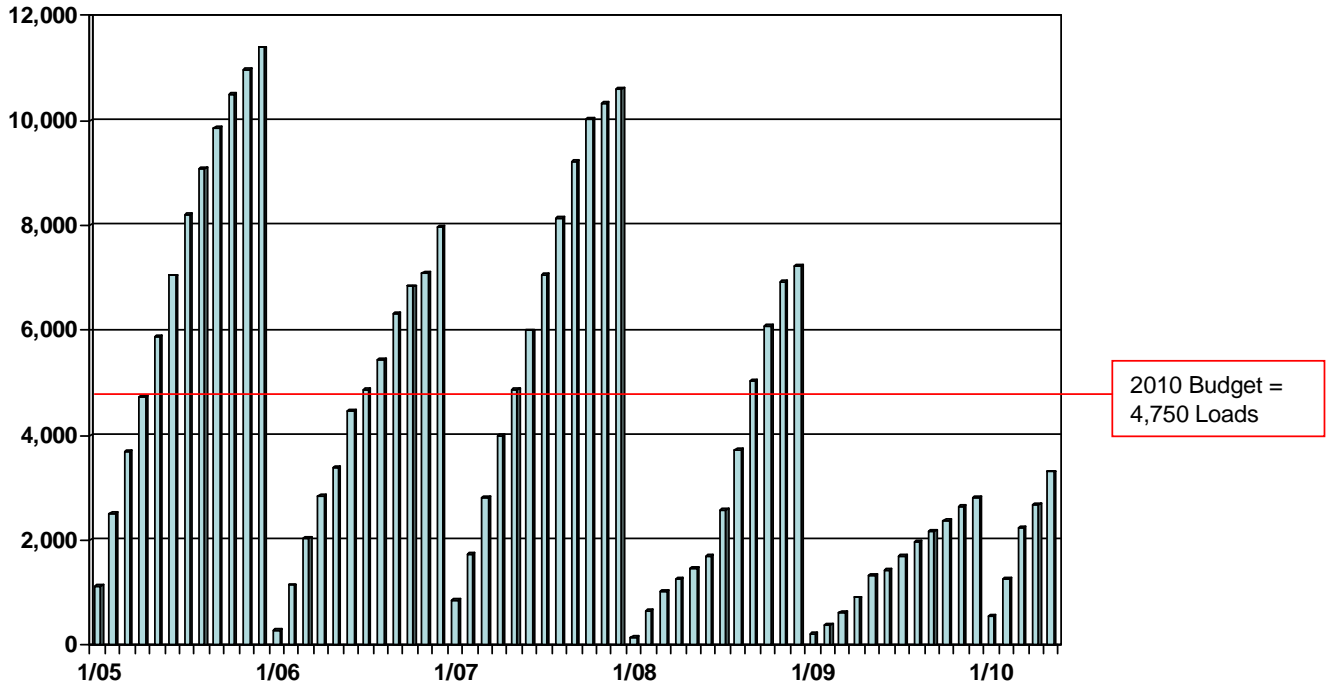
**Terminal #4**

	<b>MTD 2010</b>	<b>YTD 2010</b>	<b>YTD 2009</b>
<b>Terminal Activity</b>			
<b>TOTAL # VESSELS @ Berth</b>	<b>0</b>	<b>0</b>	<b>0</b>
<b>TOTAL # DOCK DAYS</b>	<b>0</b>	<b>0</b>	<b>0</b>

NOTE: Unaudited information

# Port of Port Angeles LY Loads - Cumulative

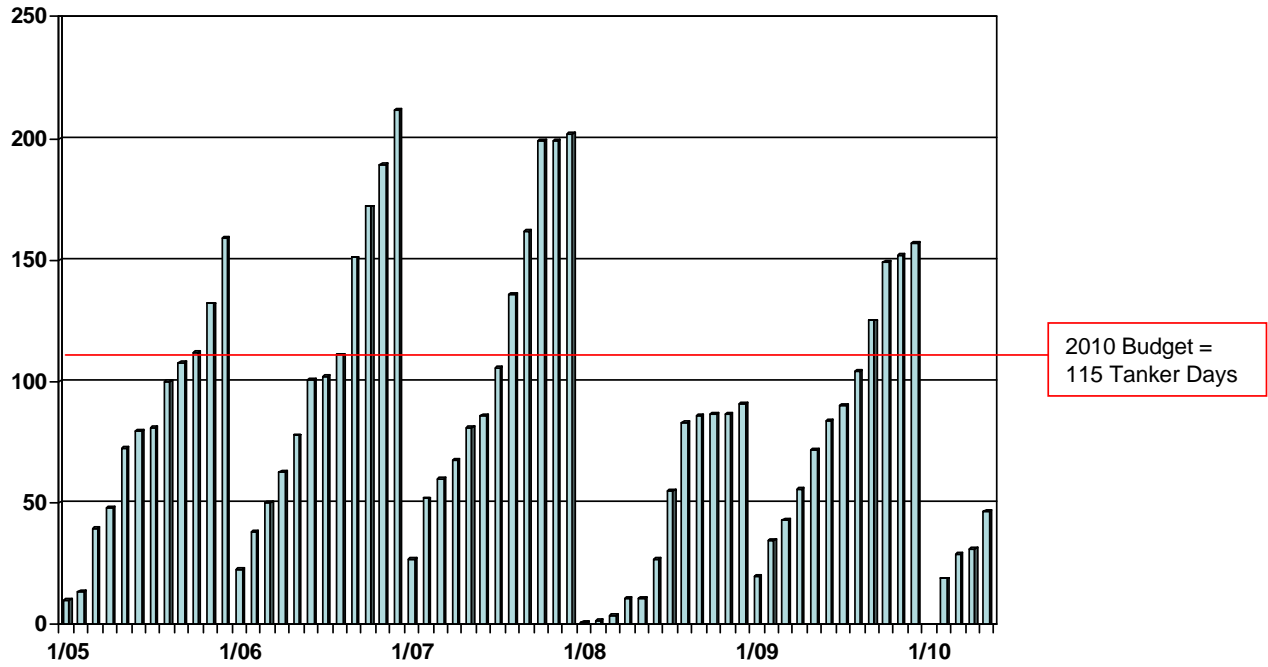
January 2005 – May 2010



Year	Jan	Feb	Mar	April	May	June	July	Aug	Sept	Oct	Nov	Dec
2005	1,127	2,521	3,698	4,739	5,887	7,046	8,202	9,095	9,863	10,494	10,965	11,391
2006	294	1,150	2,055	2,844	3,403	4,461	4,878	5,450	6,309	6,842	7,109	7,979
2007	872	1,741	2,818	4,000	4,857	6,001	7,075	8,149	9,209	10,018	10,316	10,599
2008	161	657	1,019	1,253	1,477	1,702	2,567	3,734	5,040	6,076	6,929	7,216
2009	234	389	619	914	1,335	1,429	1,717	1,976	2,168	2,389	2,547	2,819
2010	548	1,276	2,234	2,694	3,305							

# Port of Port Angeles MT Tanker Days - Cumulative

January 2005 – May 2010



Year	Jan	Feb	Mar	April	May	June	July	Aug	Sept	Oct	Nov	Dec
2005	10	14	40	48	73	80	81	100	108	112	132	159
2006	23	38	50	63	78	101	102	111	151	172	189	212
2007	27	52	60	68	81	86	106	136	162	199	199	202
2008	1	2	4	11	11	27	55	83	86	87	87	91
2009	20	35	43	56	72	84	90	104	125	149	152	157
2010	0	19	29	31	47							

## REPORT TO THE BOARD OF PORT COMMISSIONERS OPERATIONS REPORT FOR MAY 2010

### Port Angeles Boat Haven

Slip Length	No. of Slips	Occupied	Vacant
<20'	1	0	1
20' - 29'	93	31	62
30' - 39'	111	95	16
40' - 49'	51	45	6
50' - 59'	91	65	26
60+ ft.	3	2	1
<b>TOTAL</b>	<b>350</b>	<b>238</b>	<b>112</b>

Side Tie	Length	Usable	Occupied	Vacant	Boats
A(limited)			115 ft		4
B	450 ft	335 ft	315 ft	20 ft	9
D	600 ft	500 ft	448 ft	52 ft	3
D/E cross			111 ft		4
F(guest)			85 ft		1
H	500 ft	375 ft	204 ft	171 ft	8
YC	440 ft	440 ft	425 ft	15 ft	3
<b>TOTAL</b>	<b>1,990 ft</b>	<b>1,650 ft</b>	<b>1703 ft</b>	<b>258 ft</b>	<b>32</b>

<b>Boats</b>	<b>270</b>	
<b>Boathouses</b>	<b>51</b>	
<b>Total Occupancy</b>	<b>321</b>	

### Boat Yard Report

Boats into the yard	45
Boats into the water	41
<b>Total Travel Lift Operations</b>	<b>86</b>


<b>2010 Year-To-Date Launch Ramp Permit Sales</b>	<b>499</b>
---	------------

### John Wayne Marina

Slip Length	Side Tie Length	No. of Slips	Occupied	Vacant	Occupancy Rate	Waiting List
28'		68	68	0	100%	0
30'		42	36	6	86%	0
32'		28	26	2	93%	0
36'		22	21	1	95%	0
40'		19	19	0	100%	0
42'		21	20	1	95%	0
45'		10	10	0	100%	0
50'		28	28	0	100%	2
Side Tie, including End Tie	2215	62	58	4	94%	1
<b>TOTAL</b>		<b>300</b>	<b>286</b>	<b>14</b>	<b>95%</b>	<b>3</b>

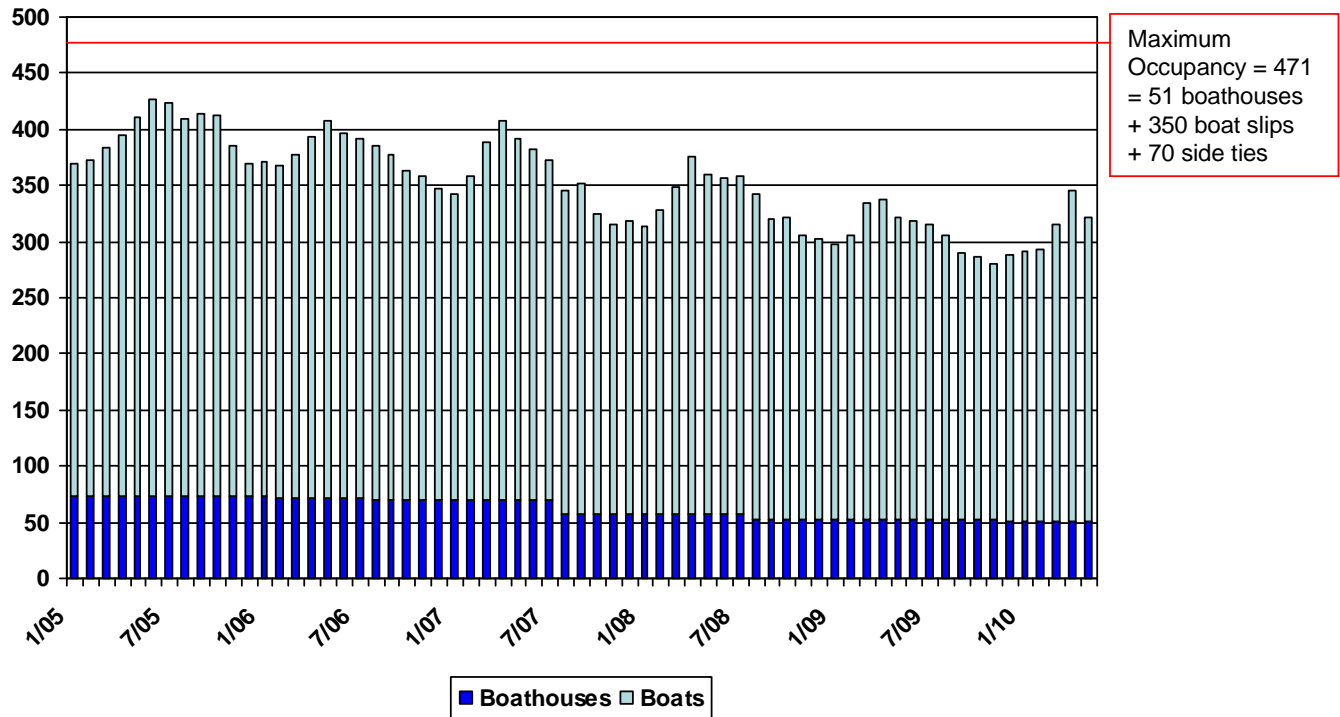
### William R. Fairchild International Airport

	ACTIVITY REPORT 2010		2009	
	May 2010	YTD 2010	May 2009	YTD 2009
<b>KENMORE AIR</b>				
CLM-BFI	891	3,676	2,494	5,377
BFI-CLM	857	3,257	2,383	4,865
<b>TOTALS</b>	<b>1,748</b>	<b>6,933</b>	<b>4,877</b>	<b>10,242</b>

# Port of Port Angeles

## PABH Slip Occupancy

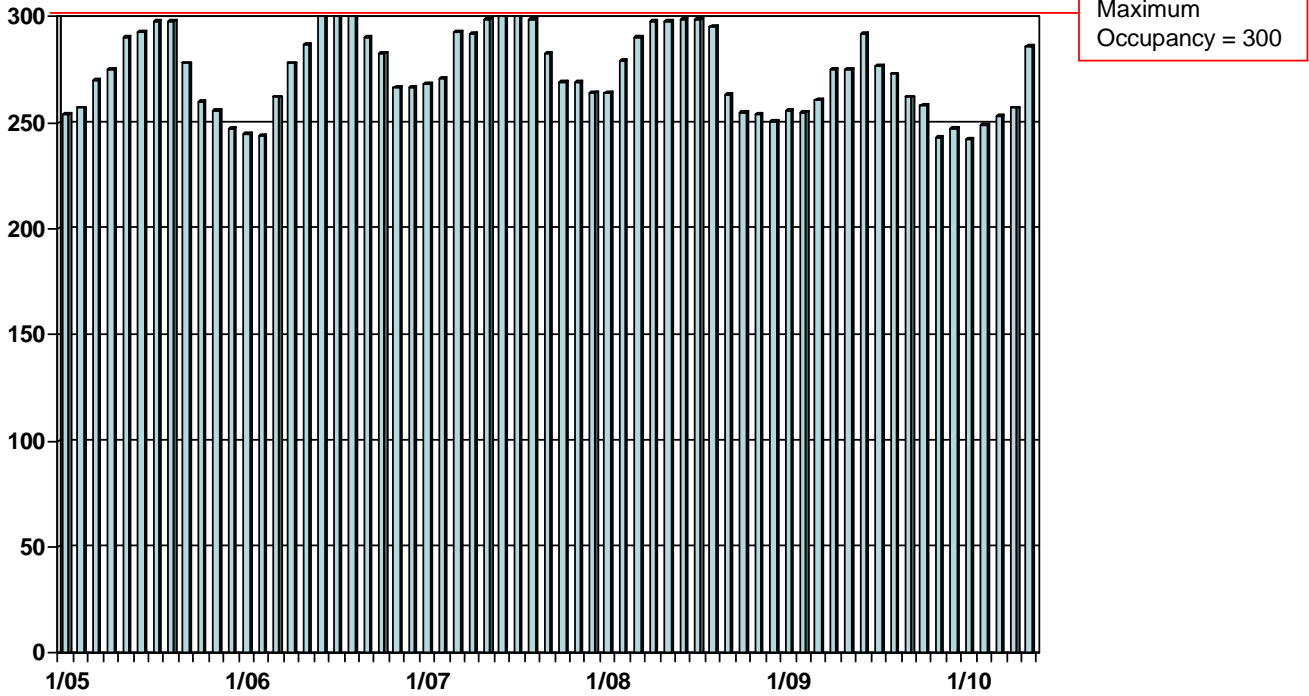
January 2005 – May 2010



Year	Jan	Feb	Mar	April	May	June	July	Aug	Sept	Oct	Nov	Dec
2005	370	373	384	395	411	427	423	410	414	412	385	370
2006	371	368	378	393	408	397	392	386	378	363	358	347
2007	343	359	389	407	392	382	372	346	352	325	316	318
2008	313	328	348	376	360	356	358	342	320	321	305	302
2009	298	306	335	338	322	319	315	305	290	286	281	288
2010	292	293	315	346	321							

# Port of Port Angeles JWM Slip Occupancy

January 2005 – May 2010

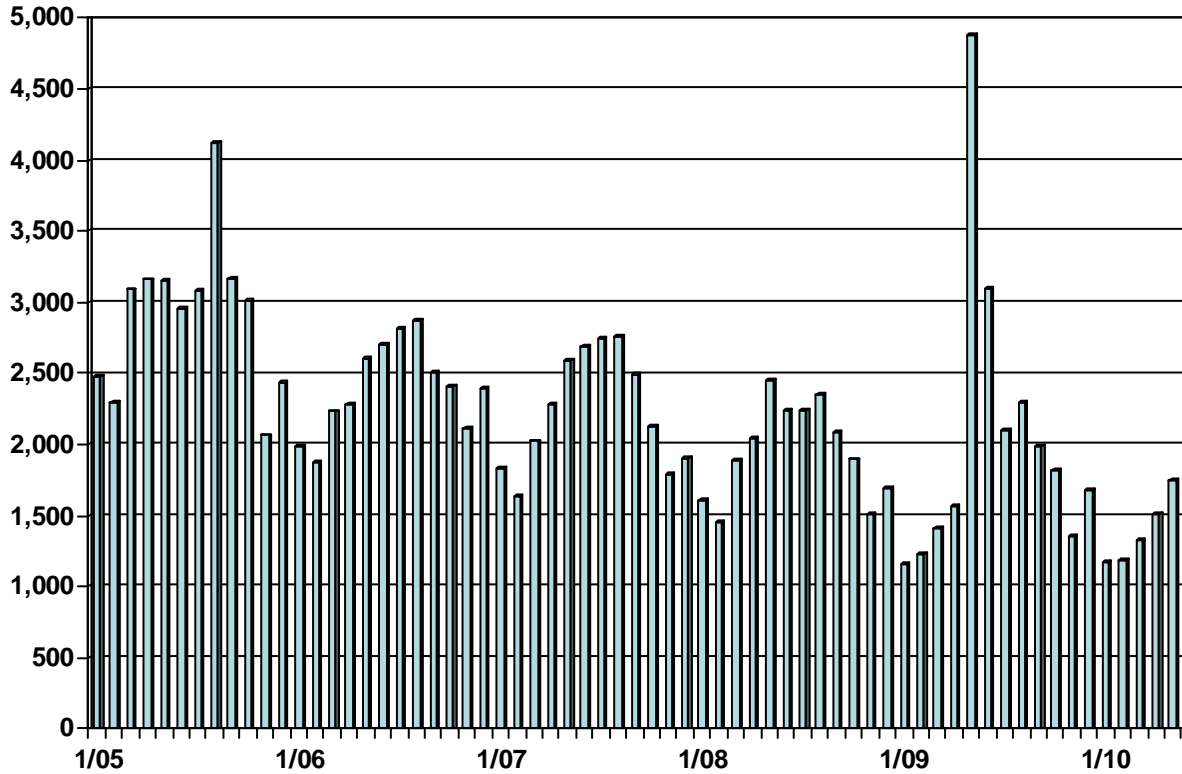


Year	Jan	Feb	Mar	April	May	June	July	Aug	Sept	Oct	Nov	Dec
2005	254	257	270	275	290	293	298	298	278	260	256	247
2006	245	244	262	278	287	300	300	300	290	283	267	267
2007	268	271	293	292	299	300	300	299	283	269	269	264
2008	264	279	290	298	298	299	299	295	263	255	254	251
2009	256	255	261	275	275	292	277	273	262	258	243	247
2010	242	249	253	257	286							

# Port of Port Angeles

## FIA Enplanements/Deplanements

January 2005 – May 2010



Year	Jan	Feb	Mar	April	May	June	July	Aug	Sept	Oct	Nov	Dec
2005	2,484	2,295	3,089	3,160	3,157	2,958	3,083	4,125	3,165	3,014	2,064	2,432
2006	1,988	1,873	2,233	2,284	2,609	2,701	2,810	2,871	2,503	2,405	2,116	2,394
2007	1,829	1,635	2,023	2,287	2,595	2,688	2,750	2,755	2,497	2,134	1,790	1,906
2008	1,609	1,459	1,895	2,047	2,451	2,245	2,244	2,358	2,086	1,897	1,508	1,691
2009	1,162	1,226	1,416	1,561	4,877	3,096	2,099	2,294	1,982	1,813	1,356	1,683
2010	1,169	1,186	1,324	1,506	1,748							

---

# MEMORANDUM

---

DATE: 6/1/10  
TO: Jeff Robb  
FROM: Holly Hairell  
  
RE: Reimbursable Days Summary for Commissioners May 2010

**John Calhoun**

**YTD**

5/10/10 Port Commission meeting  
5/11/10 Economic Summit  
5/12/10 WPPA Conference  
5/13/10 WPPA Conference  
5/19/10 Forks Chamber meeting  
5/20/10 EDC Board meeting  
5/24/10 Port Commission meeting  
5/26/10 Forks Chamber meeting  
5/27/10 Olympic Wilderness meeting

**47**

**George Schoenfeldt**

5/1/10 Olympic Logging conference  
5/7/10 Cruise Ship welcome  
5/10/10 Port Commission meeting  
5/11/10 WPPA Conference  
5/12/10 WPPA Conference  
5/13/10 WPPA Conference  
5/15/10 Cruise Ship welcome  
5/24/10 Port Commission meeting  
5/26/10 PABA Waterfront meeting

**51**

**Jim McEntire**

5/7/10 Cruise Ship welcome  
5/10/10 Port Commission meeting  
5/11/10 WPPA Conference  
5/12/10 WPPA Conference  
5/13/10 WPPA Conference  
5/15/10 Cruise Ship welcome  
5/17/10 Marine Resources Committee meeting  
5/24/10 Port Commission meeting  
5/25/10 Sequim Chamber luncheon  
5/27/10 Peninsula Development District & NOPRC&D meetings

**53**

**Maximum number of compensated meeting days allowed each calendar year - Total 96.**