

**REPORT TO THE BOARD OF PORT COMMISSIONERS
MARCH 2010**

SUBJECT: REPORTS REQUIRED UNDER THE PROVISIONS OF THE MASTER POLICY

| REPORT | NO ACTION | ATTACHED |
|--------------------------------------------------------------------------------------------------------|-----------|----------|
| Month to Month Leases Executed | X | |
| Lease Bond, Rental Insurance Deviations | X | |
| Work Contracts (over \$5,000) Executed | X | |
| Change Orders Authorized | | X |
| Work by Port Crews or Day Labor (over \$5,000) | X | |
| Claims Settled (under \$1,000) | X | |
| Professional & Consulting Services Awarded and Architectural, Engineering & Technical Services Awarded | X | |
| Travel Approved within WA, OR, and Vancouver or Victoria B.C. | | X |
| Uncollectible Accounts Written Off | X | |
| Experts Engaged for Litigation | X | |
| Tariff Adjustments | X | |
| Quarterly Treasurer Investment Reports (April, July, October, January) | X | |
| | | |

Jeff Robb
Executive Director

CHANGE ORDERS AUTHORIZED BY THE EXECUTIVE DIRECTOR
(In Accordance with Master Policy)
MARCH 2010

| PROJECT | REASON FOR CHANGE | COST OF CHANGE ORDER | TOTAL OF ALL CHANGE ORDERS | % OF TOTAL PROJECT COST |
|----------------------|-------------------|----------------------|----------------------------|-------------------------|
| Pen-Ply Roof Repairs | Additional Leaks | \$5,000.00 | \$5,000.00 | 10.85% |
| | | | | |

TRAVEL APPROVED BY THE EXECUTIVE DIRECTOR
(In Accordance with Master Policy)
MARCH 2010

| STAFF PERSON | LOCATION OF MTG. | DATE(S) | PURPOSE |
|---------------------|-------------------------|----------------|--------------------------------------------|
| Doug Sandau | Seattle | 3/4 | FAA Master Plan URS Consulting |
| Doug Sandau | Seattle | 3/5 | W & H Pacific General Aviation Dev. |
| Dave Hagiwara | Seattle | 3/11 | Pacific Terminals - Barge Service |
| Bill James | Seattle | 3/12 | Insurance |
| Jeff Robb | Washington, DC | 3/14-18 | Meet with Senators and Congressmen |
| Dave Hagiwara | Olympia | 3/18 | Dept of Archeology Historic Preservation |
| Pat Deja | Olympia | 3/18 | Dept of Commerce Business Solution Manager |
| Bill James | SeaTac | 3/19 | WPPA Finance |
| Dave Hagiwara | Olympia | 3/26 | DNR – Log Storage |
| Dave Hagiwara | Olympia | 3/29 | DNR – Harbor Works |
| Bill James | Olympia | 3/31 | Dept of Commerce |
| | | | |

**REPORT TO THE BOARD OF PORT COMMISSIONERS
LOG HANDLING AND MARINE TERMINAL OPERATIONS
MARCH 2010**

Log Handling

| | MTD 2010 | YTD 2010 | YTD 2009 |
|----------------------------------------------------------|---------------------|---------------------|---------------------|
| Log Operation: | | | |
| Dumped Loads | 310 | 843 | 128 |
| Decked Loads | 642 | 1,305 | 76 |
| T-7 Container Operations* | | | |
| # Containers Loaded | 6 | 86 | 363 |
| T-7/T-5 Log Operation-Discharge (Inbound/DeWater) | | | |
| # of Barges | 0 | 0 | 0 |
| # Barge Loads-Offload | 0 | 0 | 0 |
| # DeWater Loads - R/RB | 0 | 0 | 0 |
| TOTAL LOADS | 958 | 2,234 | 567 |

* Ops commenced 8/19/08

Terminals #1 & #3

| | MTD 2010 | YTD 2010 | YTD 2009 |
|--------------------------|---------------------|---------------------|---------------------|
| Terminal Activity | | | |
| Repair Vessels – Tanker | 2 | 6 | 7 |
| Repair Vessels – Other+ | 1 | 1 | 3 |
| Cargo Vessels * Log Ship | 1 | 1 | 0 |
| Other | 22 | 30 | 35 |
| TOTAL # VESSELS | 26 | 37 | 45 |
| TOTAL # DOCK DAYS | 52 | 80 | 136 |

* Includes passenger vessels

Terminal #7

| | MTD 2010 | YTD 2010 | YTD 2009 |
|--------------------------------|---------------------|---------------------|---------------------|
| Terminal Activity | | | |
| TOTAL # VESSELS @ Berth | 2 | 16 | 0 |
| TOTAL # DOCK DAYS | 2 | 16 | 0 |

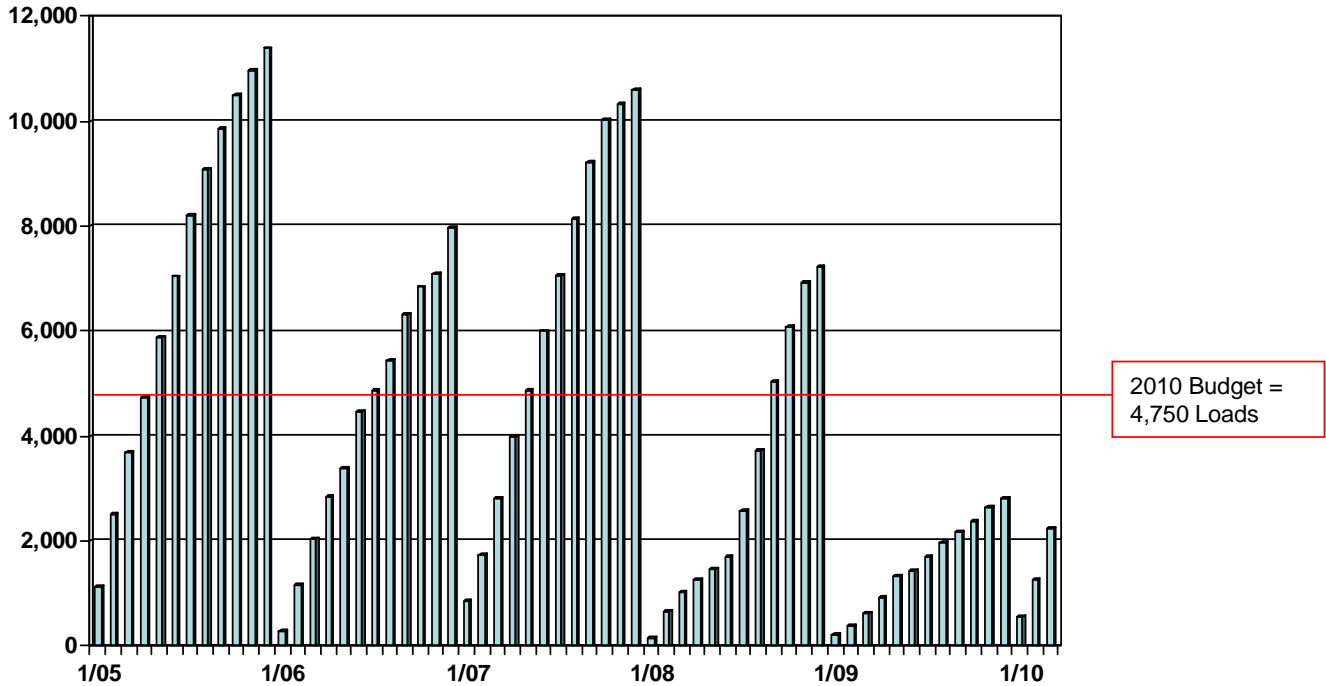
Terminal #4

| | MTD 2010 | YTD 2010 | YTD 2009 |
|--------------------------------|---------------------|---------------------|---------------------|
| Terminal Activity | | | |
| TOTAL # VESSELS @ Berth | 0 | 0 | 0 |
| TOTAL # DOCK DAYS | 0 | 0 | 0 |

NOTE: Unaudited information

Port of Port Angeles LY Loads - Cumulative

January 2005 – March 2010

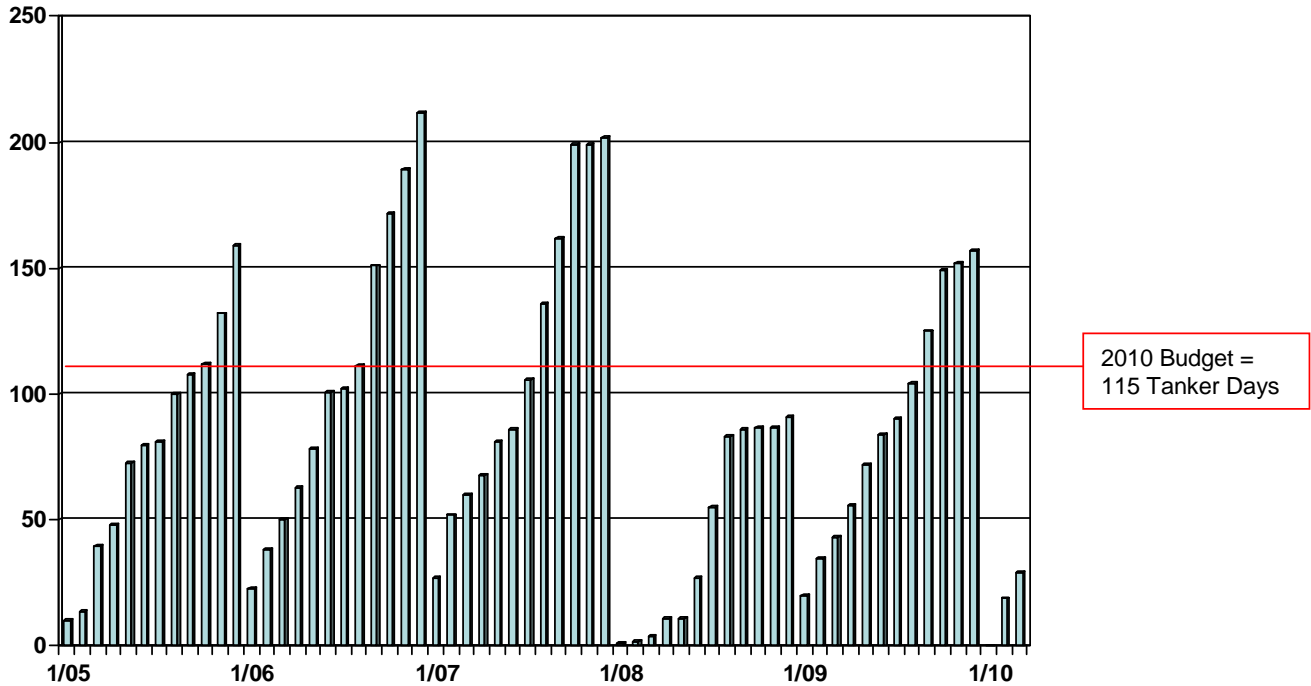


2010 Budget =
4,750 Loads

| Year | Jan | Feb | Mar | April | May | June | July | Aug | Sept | Oct | Nov | Dec |
|------|-------|-------|-------|-------|-------|-------|-------|-------|-------|--------|--------|--------|
| 2005 | 1,127 | 2,521 | 3,698 | 4,739 | 5,887 | 7,046 | 8,202 | 9,095 | 9,863 | 10,494 | 10,965 | 11,391 |
| 2006 | 294 | 1,150 | 2,055 | 2,844 | 3,403 | 4,461 | 4,878 | 5,450 | 6,309 | 6,842 | 7,109 | 7,979 |
| 2007 | 872 | 1,741 | 2,818 | 4,000 | 4,857 | 6,001 | 7,075 | 8,149 | 9,209 | 10,018 | 10,316 | 10,599 |
| 2008 | 161 | 657 | 1,019 | 1,253 | 1,477 | 1,702 | 2,567 | 3,734 | 5,040 | 6,076 | 6,929 | 7,216 |
| 2009 | 234 | 389 | 619 | 914 | 1,335 | 1,429 | 1,717 | 1,976 | 2,168 | 2,389 | 2,547 | 2,819 |
| 2010 | 548 | 1,276 | 2,234 | | | | | | | | | |

Port of Port Angeles MT Tanker Days - Cumulative

January 2005 – March 2010



| Year | Jan | Feb | Mar | April | May | June | July | Aug | Sept | Oct | Nov | Dec |
|------|-----|-----|-----|-------|-----|------|------|-----|------|-----|-----|-----|
| 2005 | 10 | 14 | 40 | 48 | 73 | 80 | 81 | 100 | 108 | 112 | 132 | 159 |
| 2006 | 23 | 38 | 50 | 63 | 78 | 101 | 102 | 111 | 151 | 172 | 189 | 212 |
| 2007 | 27 | 52 | 60 | 68 | 81 | 86 | 106 | 136 | 162 | 199 | 199 | 202 |
| 2008 | 1 | 2 | 4 | 11 | 11 | 27 | 55 | 83 | 86 | 87 | 87 | 91 |
| 2009 | 20 | 35 | 43 | 56 | 72 | 84 | 90 | 104 | 125 | 149 | 152 | 157 |
| 2010 | 0 | 19 | 29 | | | | | | | | | |

REPORT TO THE BOARD OF PORT COMMISSIONERS OPERATIONS REPORT FOR MARCH 2010

Port Angeles Boat Haven

| Slip Length | No. of Slips | Occupied | Vacant |
|--------------|--------------|------------|------------|
| <20' | 1 | 0 | 1 |
| 20' - 29' | 93 | 28 | 65 |
| 30' - 39' | 111 | 83 | 28 |
| 40' - 49' | 51 | 44 | 7 |
| 50' - 59' | 91 | 74 | 17 |
| 60+ ft. | 3 | 3 | 0 |
| TOTAL | 350 | 232 | 118 |

| Side Tie | Length | Usable | Occupied | Vacant | Boats |
|--------------|-----------------|-----------------|----------------|---------------|-----------|
| A(limited) | | | 115 ft | | 4 |
| B | 450 ft | 335 ft | 315 ft | 20 ft | 9 |
| D | 600 ft | 500 ft | 368 ft | 132 ft | 3 |
| D/E cross | | | 111 ft | | 4 |
| F(guest) | | | 310 ft | | 3 |
| H | 500 ft | 375 ft | 145 ft | 230 ft | 6 |
| YC | 440 ft | 440 ft | 425 ft | 15 ft | 3 |
| TOTAL | 1,990 ft | 1,650 ft | 1789 ft | 397 ft | 32 |

| | | |
|------------------------|------------|--|
| Boats | 264 | |
| Boathouses | 51 | |
| Total Occupancy | 315 | |

Boat Yard Report

| | |
|-------------------------------------|-----------|
| Boats into the yard | 30 |
| Boats into the water | 29 |
| Total Travel Lift Operations | 59 |

| | |
|--|--|
| | |
| | |
| | |

| | |
|---------------------------------------------------|------------|
| 2010 Year-To-Date Launch Ramp Permit Sales | 334 |
|---------------------------------------------------|------------|

John Wayne Marina

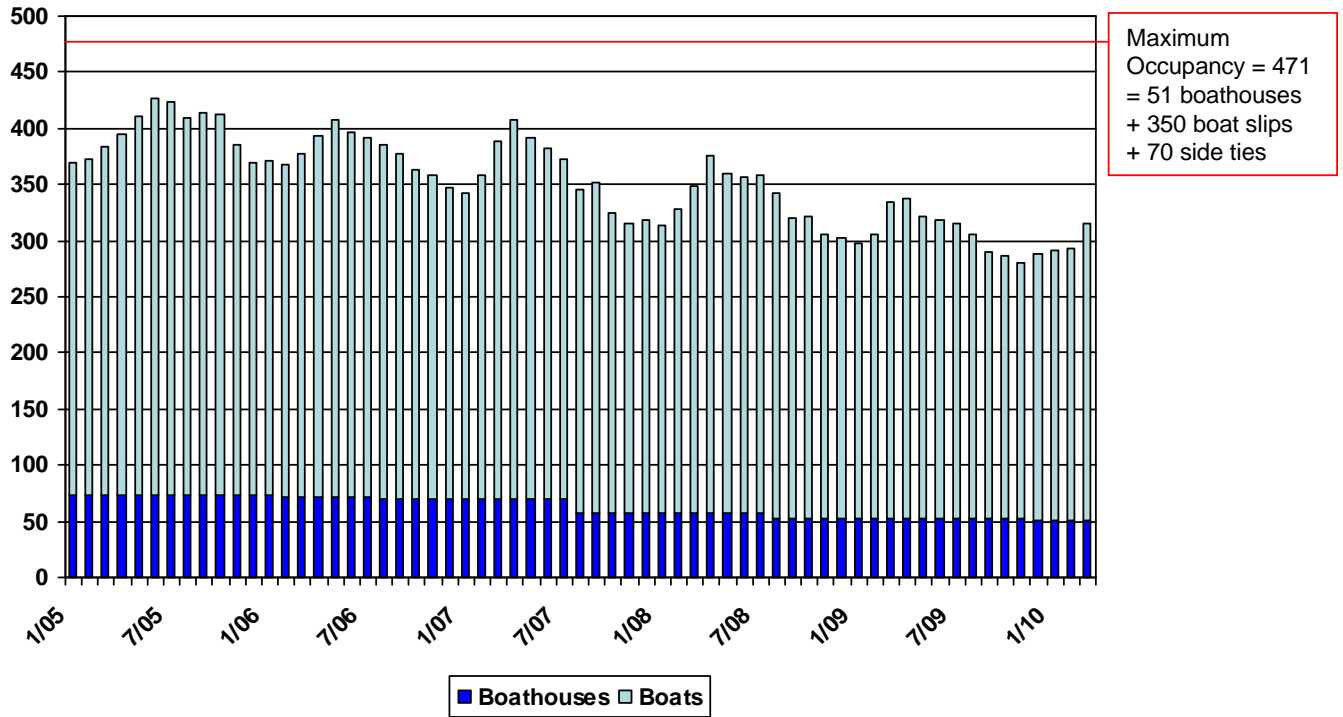
| Slip Length | Side Tie Length | No. of Slips | Occupied | Vacant | Occupancy Rate | Waiting List |
|-----------------------------|-----------------|--------------|------------|-----------|----------------|--------------|
| 28' | | 68 | 43 | 25 | 63% | 0 |
| 30' | | 42 | 35 | 7 | 83% | 0 |
| 32' | | 28 | 26 | 2 | 93% | 0 |
| 36' | | 22 | 21 | 1 | 95% | 0 |
| 40' | | 19 | 18 | 1 | 95% | 0 |
| 42' | | 21 | 20 | 1 | 95% | 0 |
| 45' | | 10 | 10 | 0 | 100% | 1 |
| 50' | | 28 | 27 | 1 | 96% | 2 |
| Side Tie, including End Tie | 2215 | 62 | 53 | 9 | 85% | 1 |
| TOTAL | | 300 | 253 | 47 | 84% | 4 |

William R. Fairchild International Airport

| | ACTIVITY REPORT 2010 | | 2009 | |
|--------------------|-------------------------|--------------|--------------|--------------|
| | Mar 2010 | YTD 2010 | Mar 2009 | YTD 2009 |
| | | | | |
| KENMORE AIR | | | | |
| CLM-BFI | 700 | 1,988 | 755 | 2,033 |
| BFI-CLM | 624 | 1,691 | 661 | 1,771 |
| | | | | |
| TOTALS | 1,324 | 3,679 | 1,416 | 3,804 |

Port of Port Angeles PABH Slip Occupancy

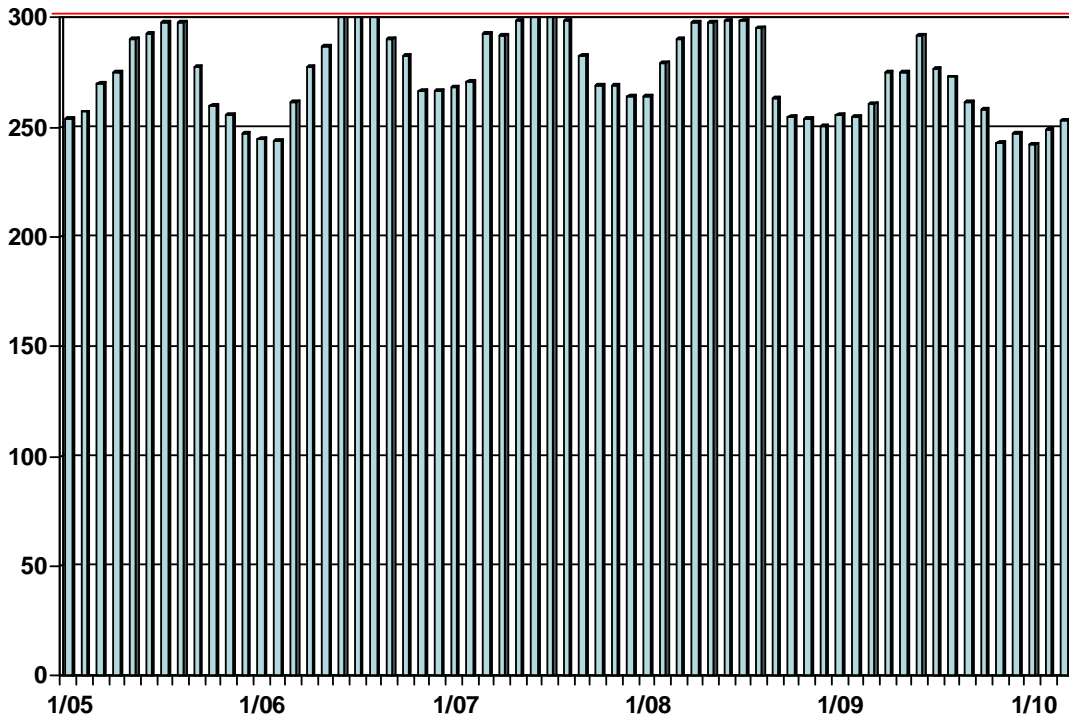
January 2005 – March 2010



| Year | Jan | Feb | Mar | April | May | June | July | Aug | Sept | Oct | Nov | Dec |
|------|-----|-----|-----|-------|-----|------|------|-----|------|-----|-----|-----|
| 2005 | 370 | 373 | 384 | 395 | 411 | 427 | 423 | 410 | 414 | 412 | 385 | 370 |
| 2006 | 371 | 368 | 378 | 393 | 408 | 397 | 392 | 386 | 378 | 363 | 358 | 347 |
| 2007 | 343 | 359 | 389 | 407 | 392 | 382 | 372 | 346 | 352 | 325 | 316 | 318 |
| 2008 | 313 | 328 | 348 | 376 | 360 | 356 | 358 | 342 | 320 | 321 | 305 | 302 |
| 2009 | 298 | 306 | 335 | 338 | 322 | 319 | 315 | 305 | 290 | 286 | 281 | 288 |
| 2010 | 292 | 293 | 315 | | | | | | | | | |

Port of Port Angeles JWM Slip Occupancy

January 2005 – March 2010



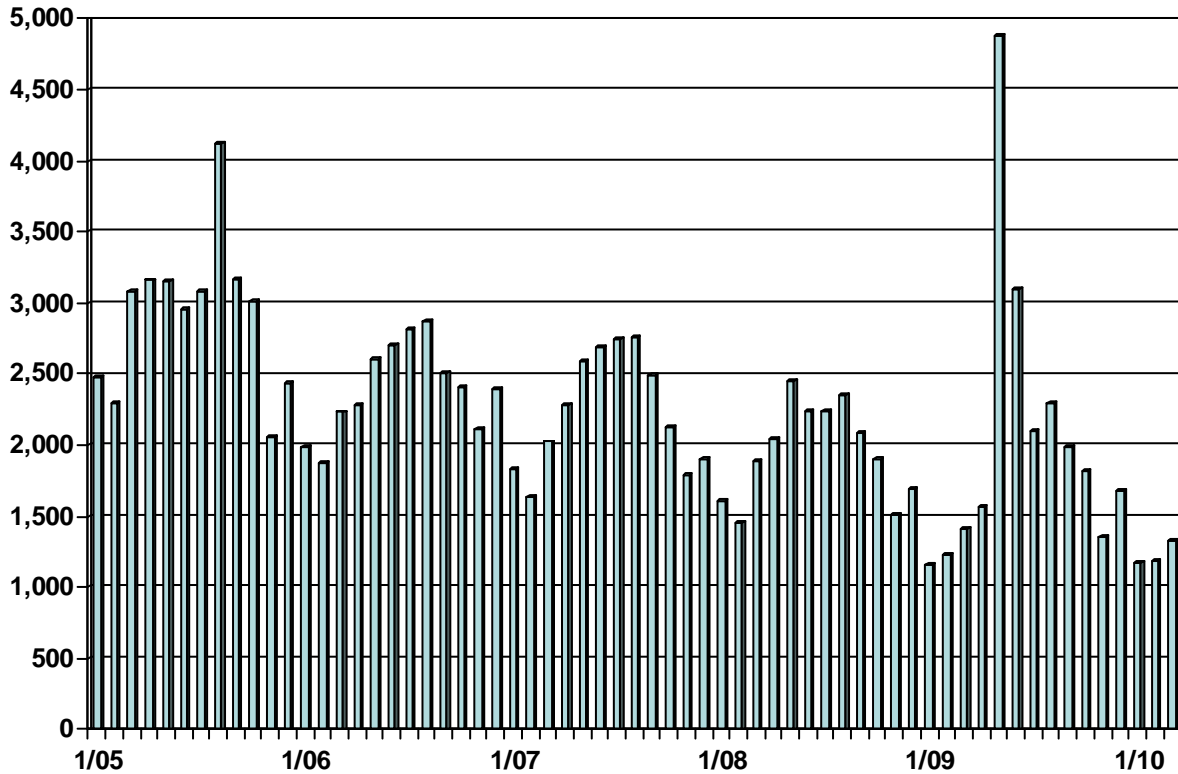
Maximum
Occupancy = 300

| Year | Jan | Feb | Mar | April | May | June | July | Aug | Sept | Oct | Nov | Dec |
|------|-----|-----|-----|-------|-----|------|------|-----|------|-----|-----|-----|
| 2005 | 254 | 257 | 270 | 275 | 290 | 293 | 298 | 298 | 278 | 260 | 256 | 247 |
| 2006 | 245 | 244 | 262 | 278 | 287 | 300 | 300 | 300 | 290 | 283 | 267 | 267 |
| 2007 | 268 | 271 | 293 | 292 | 299 | 300 | 300 | 299 | 283 | 269 | 269 | 264 |
| 2008 | 264 | 279 | 290 | 298 | 298 | 299 | 299 | 295 | 263 | 255 | 254 | 251 |
| 2009 | 256 | 255 | 261 | 275 | 275 | 292 | 277 | 273 | 262 | 258 | 243 | 247 |
| 2010 | 242 | 249 | 253 | | | | | | | | | |

Port of Port Angeles

FIA Enplanements/Deplanements

January 2005 – March 2010



| Year | Jan | Feb | Mar | April | May | June | July | Aug | Sept | Oct | Nov | Dec |
|------|-------|-------|-------|-------|-------|-------|-------|-------|-------|-------|-------|-------|
| 2005 | 2,484 | 2,295 | 3,089 | 3,160 | 3,157 | 2,958 | 3,083 | 4,125 | 3,165 | 3,014 | 2,064 | 2,432 |
| 2006 | 1,988 | 1,873 | 2,233 | 2,284 | 2,609 | 2,701 | 2,810 | 2,871 | 2,503 | 2,405 | 2,116 | 2,394 |
| 2007 | 1,829 | 1,635 | 2,023 | 2,287 | 2,595 | 2,688 | 2,750 | 2,755 | 2,497 | 2,134 | 1,790 | 1,906 |
| 2008 | 1,609 | 1,459 | 1,895 | 2,047 | 2,451 | 2,245 | 2,244 | 2,358 | 2,086 | 1,897 | 1,508 | 1,691 |
| 2009 | 1,162 | 1,226 | 1,416 | 1,561 | 4,877 | 3,096 | 2,099 | 2,294 | 1,982 | 1,813 | 1,356 | 1,683 |
| 2010 | 1,169 | 1,186 | 1,324 | | | | | | | | | |

MEMORANDUM

DATE: 4/1/10
TO: Jeff Robb
FROM: Holly Hairell

RE: Reimbursable Days Summary for Commissioners March 2010

John Calhoun

YTD

3/2/10 Harbor Works Consultation
3/3/10 Forks Chamber meeting
3/5/10 PSP ECB meeting
3/8/10 Port Commission meeting
3/10/10 Forks Chamber meeting
3/17/10 Forks Chamber meeting
3/20/10 Pen Ply Ceremony
3/22/10 Port Commission meeting
3/24/10 West End Business Association meeting
3/31/10 Forks Chamber meeting

31

George Schoenfeldt

3/2/10 Harbor Works meeting
3/8/10 Port Commission meeting
3/9/10 Pen Ply meeting
3/10/10 SSA/Stevedore meeting
3/11/10 PA Forward/LEKT Scholarship dinner/NOTAC meeting
3/12/10 Ron Allen meeting
3/17/10 PABA Waterfront meeting
3/18/10 SSA/Stevedore meeting
3/20/10 Pen Ply Ceremony
3/22/10 Port Commission meeting
3/23/10 PABA meeting
3/25/10 John Wayne Property meeting
3/29/10 Battelle meeting

34

Jim McEntire

3/8/10 Port Commission meeting
3/11/10 Sequim Chamber Board meeting
3/13/10 Travel for trip to Washington DC
3/15/10 Legislative trip to Washington DC
3/16/10 Legislative trip to Washington DC
3/17/10 Legislative trip to Washington DC
3/18/10 Travel for trip to Washington DC
3/20/10 Pen Ply re-opening ceremony
3/22/10 Port Commission meeting
3/23/10 Sequim Chamber luncheon
3/25/10 Pen. Development Dist. & NOP RC&D meetings

32

Maximum number of compensated meeting days allowed each calendar year - Total 96.