

**REPORT TO THE BOARD OF PORT COMMISSIONERS
JANUARY 2010**

SUBJECT: REPORTS REQUIRED UNDER THE PROVISIONS OF THE MASTER POLICY

REPORT	NO ACTION	ATTACHED
Month to Month Leases Executed	X	
Lease Bond, Rental Insurance Deviations	X	
Work Contracts (over \$5,000) Executed		X
Change Orders Authorized	X	
Work by Port Crews or Day Labor (over \$5,000)	X	
Claims Settled (under \$1,000)	X	
Professional & Consulting Services Awarded and Architectural, Engineering & Technical Services Awarded		X
Travel Approved within WA, OR, and Vancouver or Victoria B.C.		X
Uncollectible Accounts Written Off	X	
Experts Engaged for Litigation	X	
Tariff Adjustments	X	
Quarterly Treasurer Investment Reports (April, July, October, January)	X	

Jeff Robb
Executive Director

WORK CONTRACTS EXECUTED BY THE EXECUTIVE DIRECTOR
(In Accordance with Master Policy)
JANUARY 2010

NAME OF CONTRACTOR	DESCRIPTION OF WORK	ESTIMATED COST OF PROJECT	OTHER CONTRACT TERMS
Wilson Construction	Boat Yard Sheet Pile	\$70,033.45	
Affordable Services	Pen-Ply Roof Repairs	\$46,070.00	

**PROFESSIONAL & CONSULTING SERVICES AND
ARCHITECTURAL, ENGINEERING & TECHNICAL SERVICES
AWARDED BY THE EXECUTIVE DIRECTOR
(In Accordance with Master Policy)
JANUARY 2010**

CONSULTANT	PROJECT	EST. COST	OTHER CONTRACT PROVISIONS
Reid Middleton	ACTI Expansion	\$17,700.00	

TRAVEL APPROVED BY THE EXECUTIVE DIRECTOR
(In Accordance with Master Policy)
JANUARY 2010

STAFF PERSON	LOCATION OF MTG.	DATE(S)	PURPOSE
Jesse Waknitz	Sequim	1/6	FEMA Funding Workshop
Jeff Robb	Seattle	1/14	USCG Captain of Port Briefing
Jesse Waknitz	Olympia	1/15	WPPA Environmental Meeting
Jesse Waknitz	Sequim	1/26	DOE Storm Water Workshop
Jeff Robb Dave Hagiwara Holly Hairell	Olympia	1/31	Port Day

**REPORT TO THE BOARD OF PORT COMMISSIONERS
LOG HANDLING AND MARINE TERMINAL OPERATIONS
JANUARY 2010**

Log Handling

	MTD 2010	YTD 2010	YTD 2009
Log Operation:			
Dumped Loads	229	229	37
Decked Loads	264	264	53
T-7 Container Operations*			
# Containers Loaded	55	55	113
T-7/T-5 Log Operation-Discharge (Inbound/DeWater)			
# of Barges	0	0	0
# Barge Loads-Offload	0	0	0
# DeWater Loads - R/RB	0	0	0
TOTAL LOADS	548	548	203

* Ops commenced 8/19/08

Terminals #1 & #3

	MTD 2010	YTD 2010	YTD 2009
Terminal Activity			
Repair Vessels – Tanker	0	0	3
Repair Vessels – Other+	1	1	2
Cargo Vessels *	0	0	0
Other	12	12	3
TOTAL # VESSELS	13	13	8
TOTAL # DOCK DAYS	35	35	47

* Includes passenger vessels

Terminal #7

	MTD 2010	YTD 2010	YTD 2009
Terminal Activity			
TOTAL # VESSELS @ Berth	0	0	0
TOTAL # DOCK DAYS	0	0	0

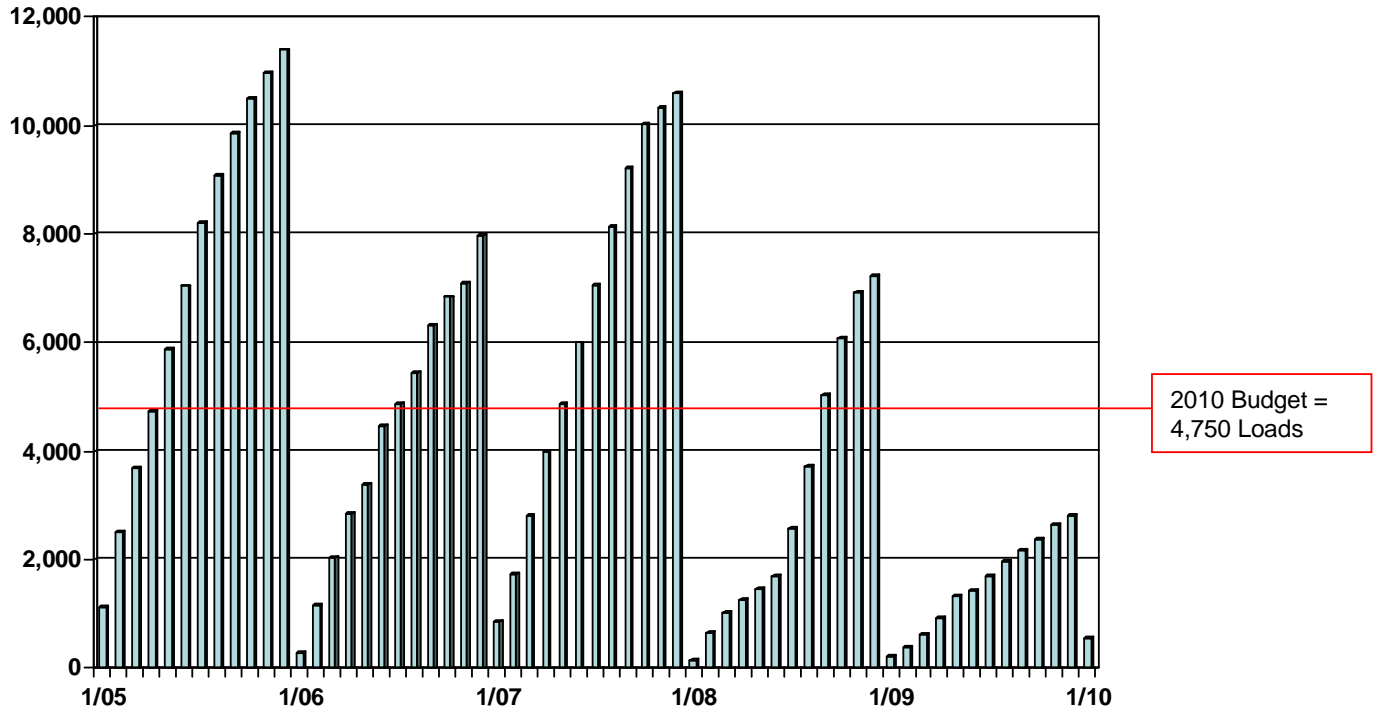
Terminal #4

	MTD 2010	YTD 2010	YTD 2009
Terminal Activity			
TOTAL # VESSELS @ Berth	0	0	0
TOTAL # DOCK DAYS	0	0	0

NOTE: Unaudited information

Port of Port Angeles LY Loads - Cumulative

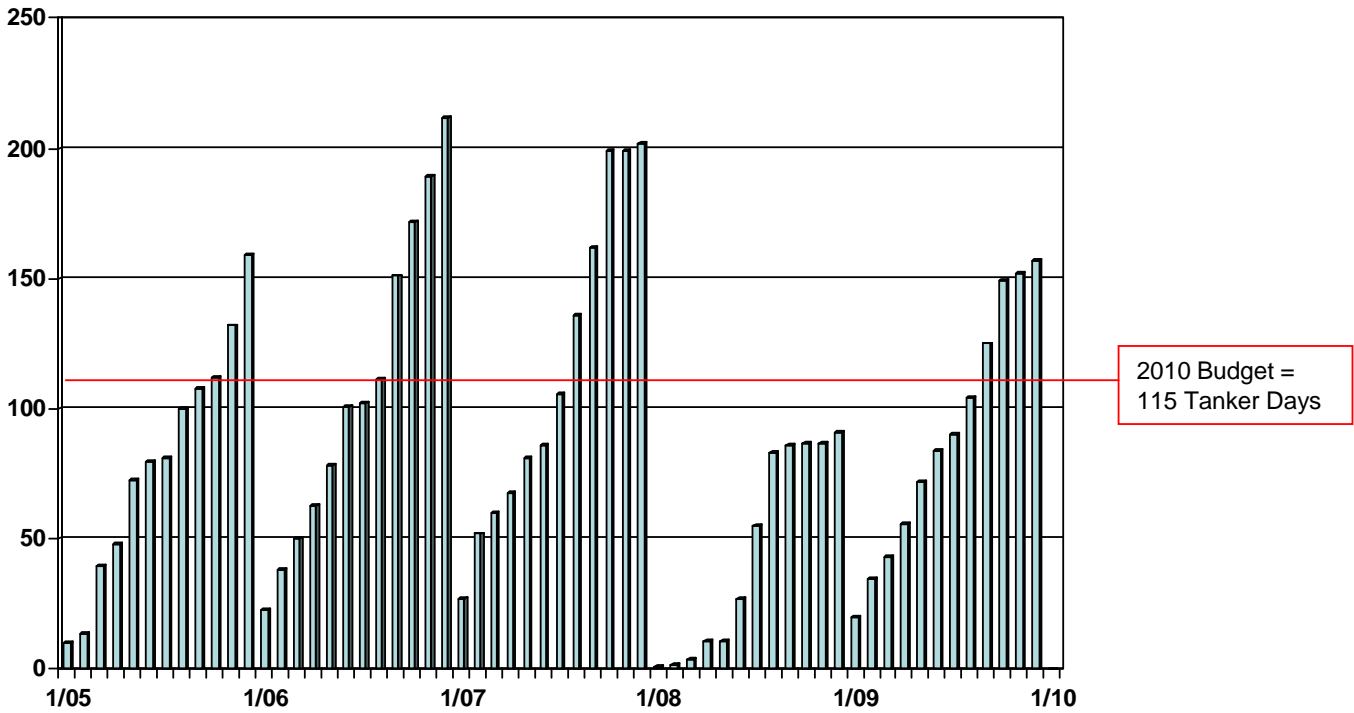
January 2005 – January 2010



Year	Jan	Feb	Mar	April	May	June	July	Aug	Sept	Oct	Nov	Dec
2005	1,127	2,521	3,698	4,739	5,887	7,046	8,202	9,095	9,863	10,494	10,965	11,391
2006	294	1,150	2,055	2,844	3,403	4,461	4,878	5,450	6,309	6,842	7,109	7,979
2007	872	1,741	2,818	4,000	4,857	6,001	7,075	8,149	9,209	10,018	10,316	10,599
2008	161	657	1,019	1,253	1,477	1,702	2,567	3,734	5,040	6,076	6,929	7,216
2009	234	389	619	914	1,335	1,429	1,717	1,976	2,168	2,389	2,547	2,819
2010	548											

Port of Port Angeles MT Tanker Days - Cumulative

January 2005 – January 2010



Year	Jan	Feb	Mar	April	May	June	July	Aug	Sept	Oct	Nov	Dec
2005	10	14	40	48	73	80	81	100	108	112	132	159
2006	23	38	50	63	78	101	102	111	151	172	189	212
2007	27	52	60	68	81	86	106	136	162	199	199	202
2008	1	2	4	11	11	27	55	83	86	87	87	91
2009	20	35	43	56	72	84	90	104	125	149	152	157
2010	0											

REPORT TO THE BOARD OF PORT COMMISSIONERS OPERATIONS REPORT FOR JANUARY 2010

Port Angeles Boat Haven

Slip Length	No. of Slips	Occupied	Vacant
<20'	1	0	1
20' - 29'	93	18	75
30' - 39'	111	75	36
40' - 49'	51	46	5
50' - 59'	91	65	26
60+ ft.	3	2	1
TOTAL	350	206	144

Side Tie	Length	Usable	Occupied	Vacant	Boats
A(limited)			115 ft		4
B	450 ft	335 ft	315 ft	20 ft	9
D	600 ft	500 ft	420 ft	80 ft	6
D/E cross			86 ft		3
F(guest)			310 ft		3
H	500 ft	375 ft	198 ft	177 ft	8
YC	440 ft	440 ft	400 ft	40 ft	2
TOTAL	1,990 ft	1,650 ft	1844 ft	317 ft	35

Boats	241	
Boathouses	51	
Total Occupancy	292	

Boat Yard Report

Boats into the yard	7
Boats into the water	5
Total Travel Lift Operations	12

2010 Year-To-Date Launch Ramp Permit Sales	138
---	------------

John Wayne Marina

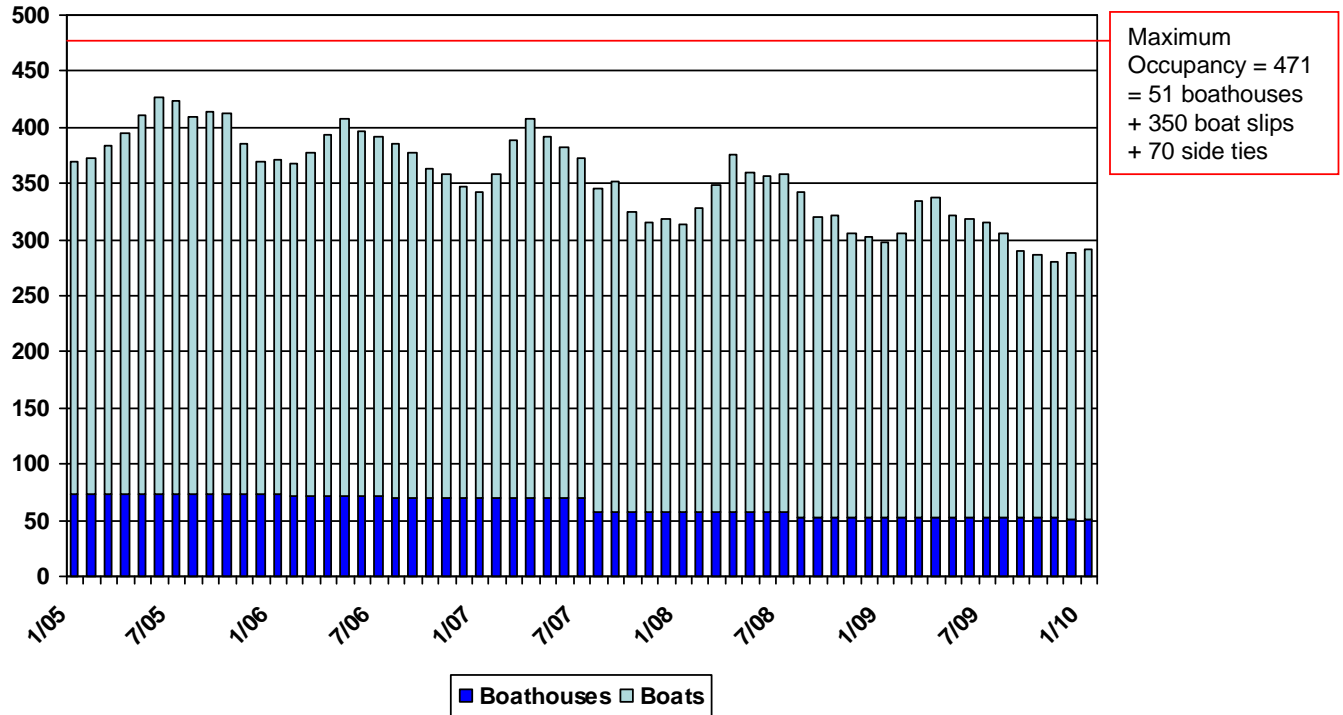
Slip Length	Side Tie Length	No. of Slips	Occupied	Vacant	Occupancy Rate	Waiting List
28'		68	33	35	49%	0
30'		42	32	10	76%	0
32'		28	27	1	96%	0
36'		22	22	0	100%	2
40'		19	19	0	100%	0
42'		21	20	1	95%	0
45'		10	10	0	100%	1
50'		28	25	3	89%	1
Side Tie, including End Tie	2215	62	54	8	87%	1
TOTAL		300	242	58	81%	5

William R. Fairchild International Airport

	ACTIVITY REPORT 2010		2009	
	Jan 2010	YTD 2010	Jan 2009	YTD 2009
KENMORE AIR				
CLM-BFI	647	647	621	621
BFI-CLM	522	522	541	541
TOTALS	1,169	1,169	1,162	1,162

Port of Port Angeles PABH Slip Occupancy

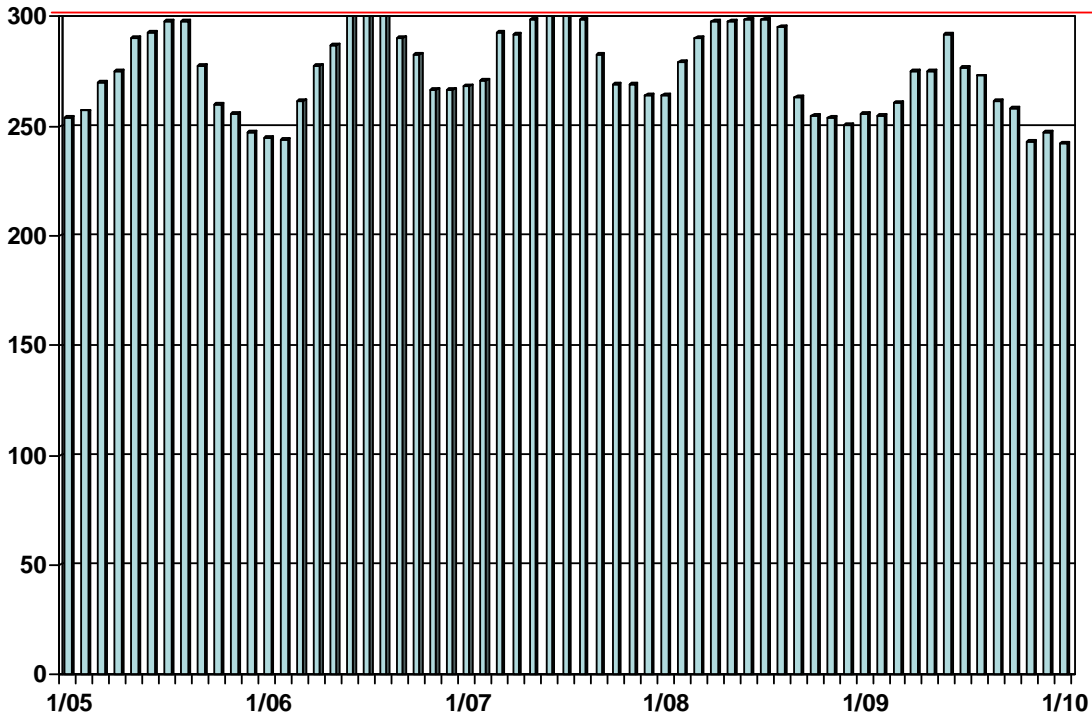
January 2005 – January 2010



Year	Jan	Feb	Mar	April	May	June	July	Aug	Sept	Oct	Nov	Dec
2005	370	373	384	395	411	427	423	410	414	412	385	370
2006	371	368	378	393	408	397	392	386	378	363	358	347
2007	343	359	389	407	392	382	372	346	352	325	316	318
2008	313	328	348	376	360	356	358	342	320	321	305	302
2009	298	306	335	338	322	319	315	305	290	286	281	288
2010	292											

Port of Port Angeles JWM Slip Occupancy

January 2005 – January 2010



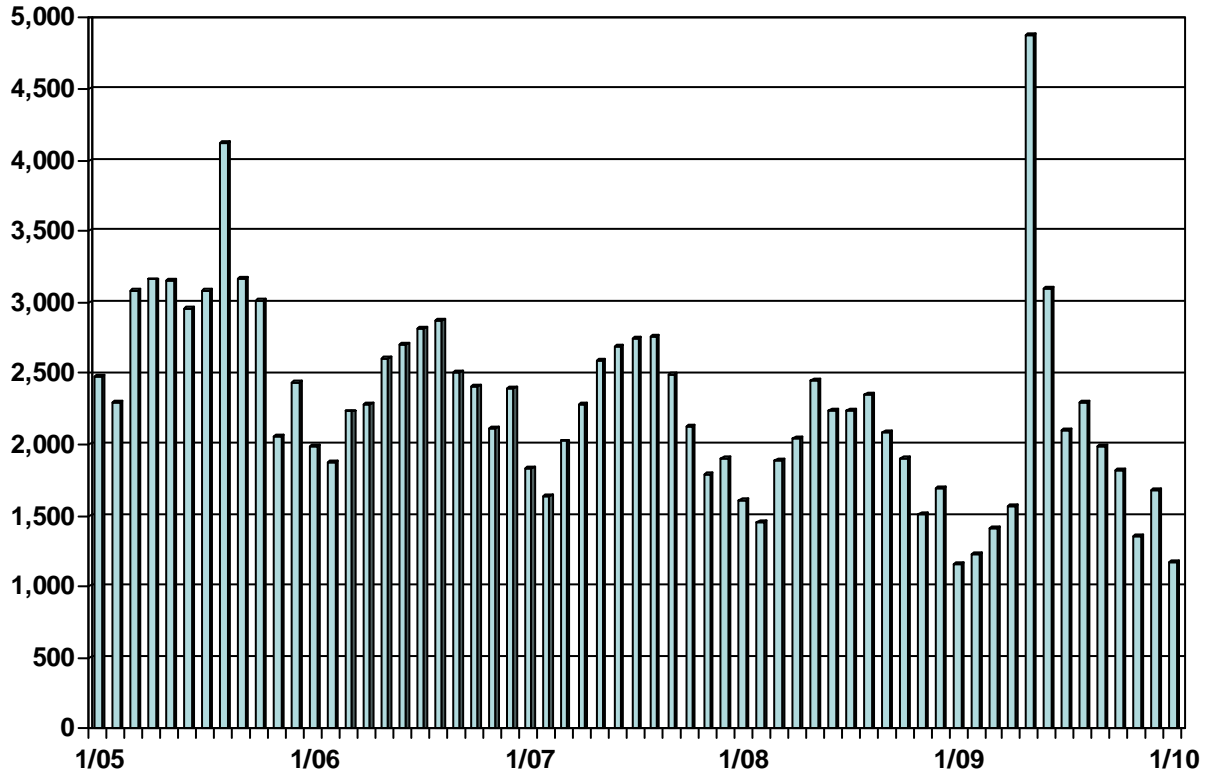
Maximum
Occupancy = 300

Year	Jan	Feb	Mar	April	May	June	July	Aug	Sept	Oct	Nov	Dec
2005	254	257	270	275	290	293	298	298	278	260	256	247
2006	245	244	262	278	287	300	300	300	290	283	267	267
2007	268	271	293	292	299	300	300	299	283	269	269	264
2008	264	279	290	298	298	299	299	295	263	255	254	251
2009	256	255	261	275	275	292	277	273	262	258	243	247
2010	242											

Port of Port Angeles

FIA Enplanements/Deplanements

January 2005 – January 2010



Year	Jan	Feb	Mar	April	May	June	July	Aug	Sept	Oct	Nov	Dec
2005	2,484	2,295	3,089	3,160	3,157	2,958	3,083	4,125	3,165	3,014	2,064	2,432
2006	1,988	1,873	2,233	2,284	2,609	2,701	2,810	2,871	2,503	2,405	2,116	2,394
2007	1,829	1,635	2,023	2,287	2,595	2,688	2,750	2,755	2,497	2,134	1,790	1,906
2008	1,609	1,459	1,895	2,047	2,451	2,245	2,244	2,358	2,086	1,897	1,508	1,691
2009	1,162	1,226	1,416	1,561	4,877	3,096	2,099	2,294	1,982	1,813	1,356	1,683
2010	1,169											

M E M O R A N D U M

DATE: 1/31/2010
TO: Jeff Robb
FROM: Holly Hairell

RE: Reimbursable Days Summary for Commissioners January 2010

John Calhoun

YTD

1/6/10 Forks Chamber meeting
1/8/10 Puget Sound Partnership meeting
1/11/10 Port Commission meeting
1/13/10 Forks Chamber meeting
1/14/10 EDC Board meeting
1/15/10 Harbor Works briefing
1/20/10 Forks Chamber meeting
1/21/10 Puget Sound Partnership meeting
1/22/10 WPPA Environmental Policy Committee meeting
1/25/10 Port Commission meeting
1/27/10 Forks Chamber meeting

11

George Schoenfeldt

1/9/10 Ron Allen meeting
1/11/10 Port Commission meeting/Jeff Lincoln meeting/Harbor Works meeting
1/12/10 SSA/Stevedoring meeting
1/14/10 PA Forward meeting
1/19/10 PABA meeting/Jeff Lincoln meeting/JW/Stevedoring meeting
1/20/10 PABA Waterfront meeting
1/22/10 City of Port Angeles staff meeting
1/25/10 Port Commission meeting

8

Jim McEntire

1/11/10 Port Commission meeting/Marine Resources Committee meeting
1/12/10 Sequim Chamber meeting
1/13/10 Capital Project Planning meeting
1/14/10 Coast Guard Maritime Security meeting
1/22/10 Peninsula Development District meeting
1/25/10 Port Commission meeting
1/26/10 Sequim Chamber meeting
1/28/10 Peninsula Development District meeting/NOP RC&D meeting
1/29/10 Economic Development Council dinner

9

Maximum number of compensated meeting days allowed each calendar year - Total 96.