

**REPORT TO THE BOARD OF PORT COMMISSIONERS
APRIL 2010**

SUBJECT: REPORTS REQUIRED UNDER THE PROVISIONS OF THE MASTER POLICY

REPORT	NO ACTION	ATTACHED
Month to Month Leases Executed	X	
Lease Bond, Rental Insurance Deviations	X	
Work Contracts (over \$5,000) Executed		X
Change Orders Authorized		X
Work by Port Crews or Day Labor (over \$5,000)	X	
Claims Settled (under \$1,000)	X	
Professional & Consulting Services Awarded and Architectural, Engineering & Technical Services Awarded	X	
Travel Approved within WA, OR, and Vancouver or Victoria B.C.		X
Uncollectible Accounts Written Off	X	
Experts Engaged for Litigation	X	
Tariff Adjustments	X	
Quarterly Treasurer Investment Reports (April, July, October, January)	X	

Jeff Robb
Executive Director

WORK CONTRACTS EXECUTED BY THE EXECUTIVE DIRECTOR
(In Accordance with Master Policy)
APRIL 2010

NAME OF CONTRACTOR	DESCRIPTION OF WORK	ESTIMATED COST OF PROJECT	OTHER CONTRACT TERMS
Sunchasers, Inc.	Terminal 1 Warehouse Piling Inspection	\$31,201.64	

CHANGE ORDERS AUTHORIZED BY THE EXECUTIVE DIRECTOR
(In Accordance with Master Policy)
APRIL 2010

PROJECT	REASON FOR CHANGE	COST OF CHANGE ORDER	TOTAL OF ALL CHANGE ORDERS	% OF TOTAL PROJECT COST
Pen-Ply Roof Repairs	Additional Roof Leaks And Fire Damage Repairs	\$18,865.66	\$23,865.66	51.8%

TRAVEL APPROVED BY THE EXECUTIVE DIRECTOR
(In Accordance with Master Policy)
APRIL 2010

STAFF PERSON	LOCATION OF MTG.	DATE(S)	PURPOSE
Dave Hagiwara	Olympia	4-1	MC2 Engineering for Black Ball
Dave Hagiwara	Federal Way	4/2	Berger Agam
Jeff Robb	Seattle	4/13-14	FAA Conference
Doug Sandau	Seattle	4/13-15	FAA NW Mountain Region Conference
Mike Nimmo	Everett	4/14	Port of Everett Security Audit
Bill James	Seattle	4/19-20	Financing Development and Bond Counsel
Mike Nimmo	Seattle	4/20	Submitted Amended FSP to USCG
Doug Sandau	Seattle	4/21	FAA DBE Training
Mike Nimmo	Vancouver, WA	4/21-23	NWMTA Spring Meeting CAPA – Port of Vancouver
Jeff Robb	Victoria, BC	4/28-5/1	Logging Conference
Dave Hagiwara	Victoria, BC	4/28-5/1	Logging Conference
Mike Nimmo	Victoria, BC	4/28-5/1	Logging Conference
Doug Sandau	La Connor	4/27	WPPA Meeting
Pat Deja	Sedro Woolley	4/29	Janicki Industries Business Visit

**REPORT TO THE BOARD OF PORT COMMISSIONERS
LOG HANDLING AND MARINE TERMINAL OPERATIONS**

APRIL 2010

Log Handling

	MTD 2010	YTD 2010	YTD 2009
Log Operation:			
Dumped Loads	270	1,113	152
Decked Loads	174	1,479	113
T-7 Container Operations*			
# Containers Loaded	16	102	622
T-7/T-5 Log Operation-Discharge (Inbound/DeWater)			
# of Barges	0	0	0
# Barge Loads-Offload	0	0	0
# DeWater Loads - R/RB	0	0	0
TOTAL LOADS	460	2,694	887

* Ops commenced 8/19/08

Terminals #1 & #3

	MTD 2010	YTD 2010	YTD 2009
Terminal Activity			
Repair Vessels – Tanker	1	7	10
Repair Vessels – Other+	3	4	4
Cargo Vessels * Log Ship	1	2	0
Other	6	36	49
TOTAL # VESSELS	11	48	63
TOTAL # DOCK DAYS	81	161	169

* Includes passenger vessels

Terminal #7

	MTD 2010	YTD 2010	YTD 2009
Terminal Activity			
TOTAL # VESSELS @ Berth	4	20	0
TOTAL # DOCK DAYS	4	20	0

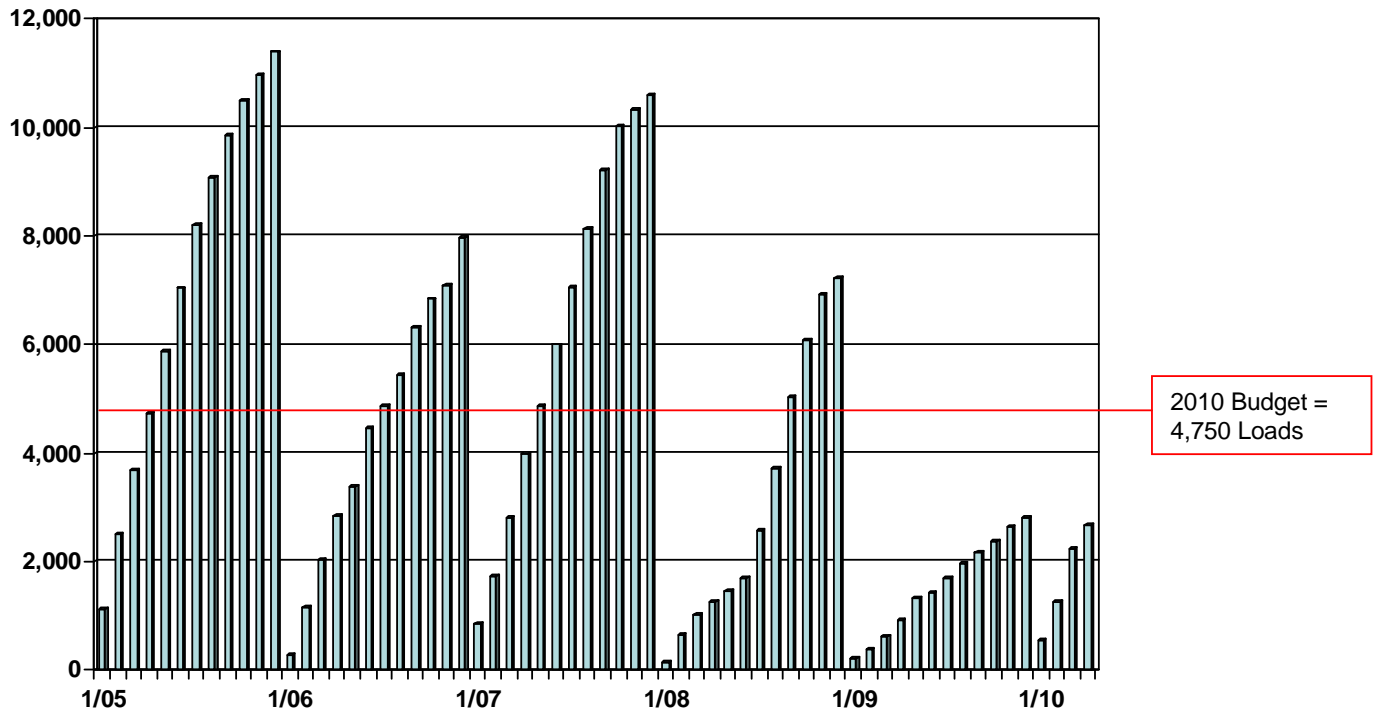
Terminal #4

	MTD 2010	YTD 2010	YTD 2009
Terminal Activity			
TOTAL # VESSELS @ Berth	0	0	0
TOTAL # DOCK DAYS	0	0	0

NOTE: Unaudited information

Port of Port Angeles LY Loads - Cumulative

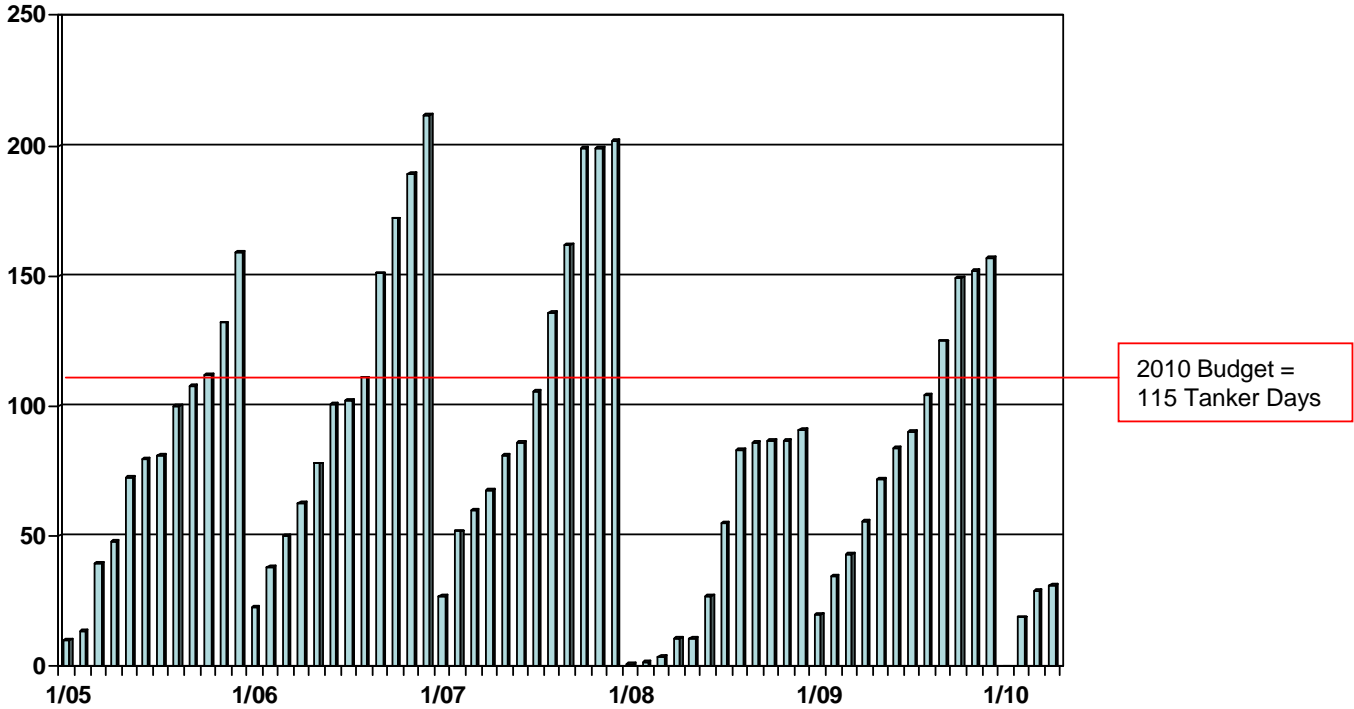
January 2005 – April 2010



Year	Jan	Feb	Mar	April	May	June	July	Aug	Sept	Oct	Nov	Dec
2005	1,127	2,521	3,698	4,739	5,887	7,046	8,202	9,095	9,863	10,494	10,965	11,391
2006	294	1,150	2,055	2,844	3,403	4,461	4,878	5,450	6,309	6,842	7,109	7,979
2007	872	1,741	2,818	4,000	4,857	6,001	7,075	8,149	9,209	10,018	10,316	10,599
2008	161	657	1,019	1,253	1,477	1,702	2,567	3,734	5,040	6,076	6,929	7,216
2009	234	389	619	914	1,335	1,429	1,717	1,976	2,168	2,389	2,547	2,819
2010	548	1,276	2,234	2,694								

Port of Port Angeles MT Tanker Days - Cumulative

January 2005 – April 2010



Year	Jan	Feb	Mar	April	May	June	July	Aug	Sept	Oct	Nov	Dec
2005	10	14	40	48	73	80	81	100	108	112	132	159
2006	23	38	50	63	78	101	102	111	151	172	189	212
2007	27	52	60	68	81	86	106	136	162	199	199	202
2008	1	2	4	11	11	27	55	83	86	87	87	91
2009	20	35	43	56	72	84	90	104	125	149	152	157
2010	0	19	29	31								

REPORT TO THE BOARD OF PORT COMMISSIONERS OPERATIONS REPORT FOR APRIL 2010

Port Angeles Boat Haven

Slip Length	No. of Slips	Occupied	Vacant
<20'	1	0	1
20' - 29'	93	34	59
30' - 39'	111	95	16
40' - 49'	51	47	4
50' - 59'	91	82	9
60+ ft.	3	2	1
TOTAL	350	260	90

Side Tie	Length	Usable	Occupied	Vacant	Boats
A(limited)			115 ft		4
B	450 ft	335 ft	315 ft	20 ft	9
D	600 ft	500 ft	523 ft	-23 ft	3
D/E cross			111 ft		4
F(guest)			310 ft		3
H	500 ft	375 ft	229 ft	146 ft	9
YC	440 ft	440 ft	425 ft	15 ft	3
TOTAL	1,990 ft	1,650 ft	2028 ft	158 ft	35

Boats	295	
Boathouses	51	
Total Occupancy	346	

Boat Yard Report

Boats into the yard	27
Boats into the water	27
Total Travel Lift Operations	54

2010 Year-To-Date Launch Ramp Permit Sales	391
---	------------

John Wayne Marina

Slip Length	Side Tie Length	No. of Slips	Occupied	Vacant	Occupancy Rate	Waiting List
28'		68	47	21	69%	0
30'		42	34	8	81%	0
32'		28	26	2	93%	0
36'		22	21	1	95%	0
40'		19	18	1	95%	0
42'		21	20	1	95%	0
45'		10	10	0	100%	0
50'		28	27	1	96%	2
Side Tie, including End Tie	2215	62	53	9	85%	1
TOTAL		300	257	43	86%	3

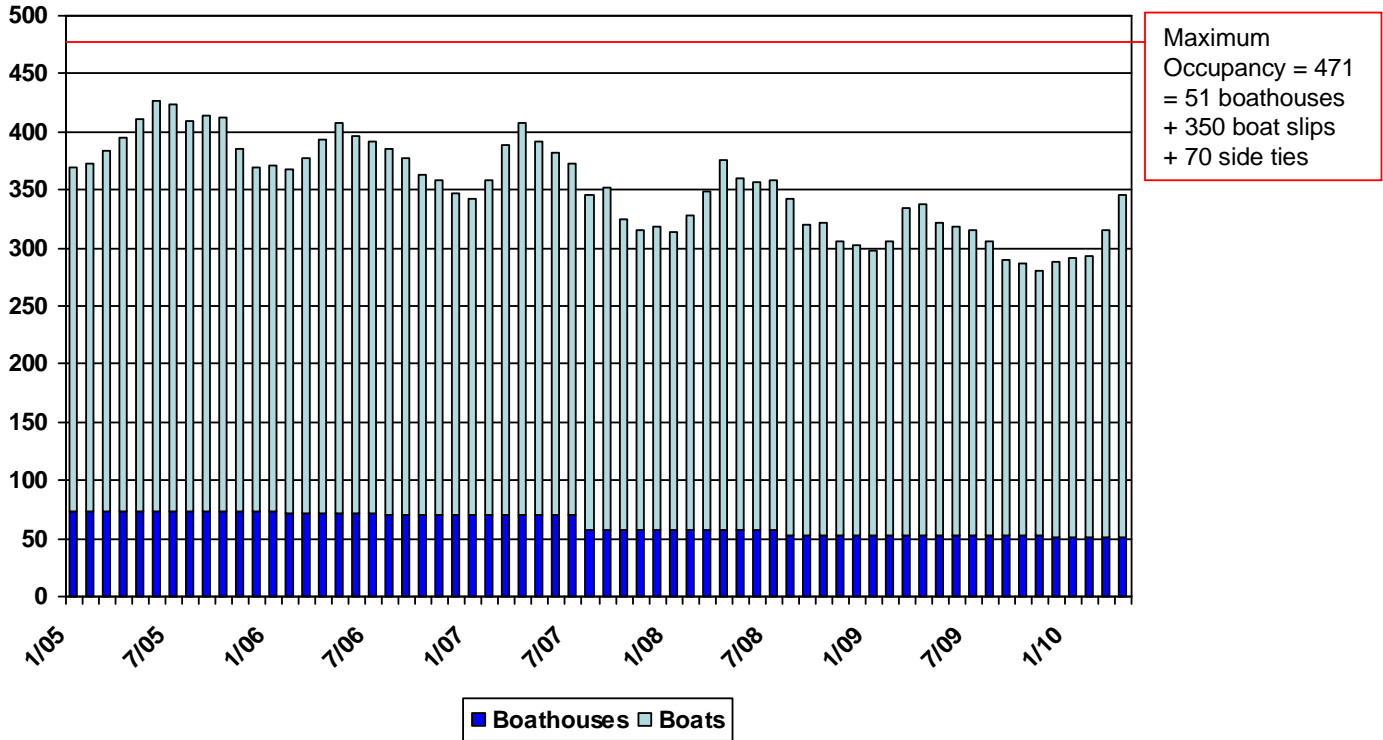
William R. Fairchild International Airport

	ACTIVITY REPORT 2010		2009	
	Apr 2010	YTD 2010	Apr 2009	YTD 2009
KENMORE AIR				
CLM-BFI	797	2,785	849	2,883
BFI-CLM	709	2,400	712	2,482
TOTALS	1,506	5,185	1,561	5,365

Port of Port Angeles

PABH Slip Occupancy

January 2005 – April 2010

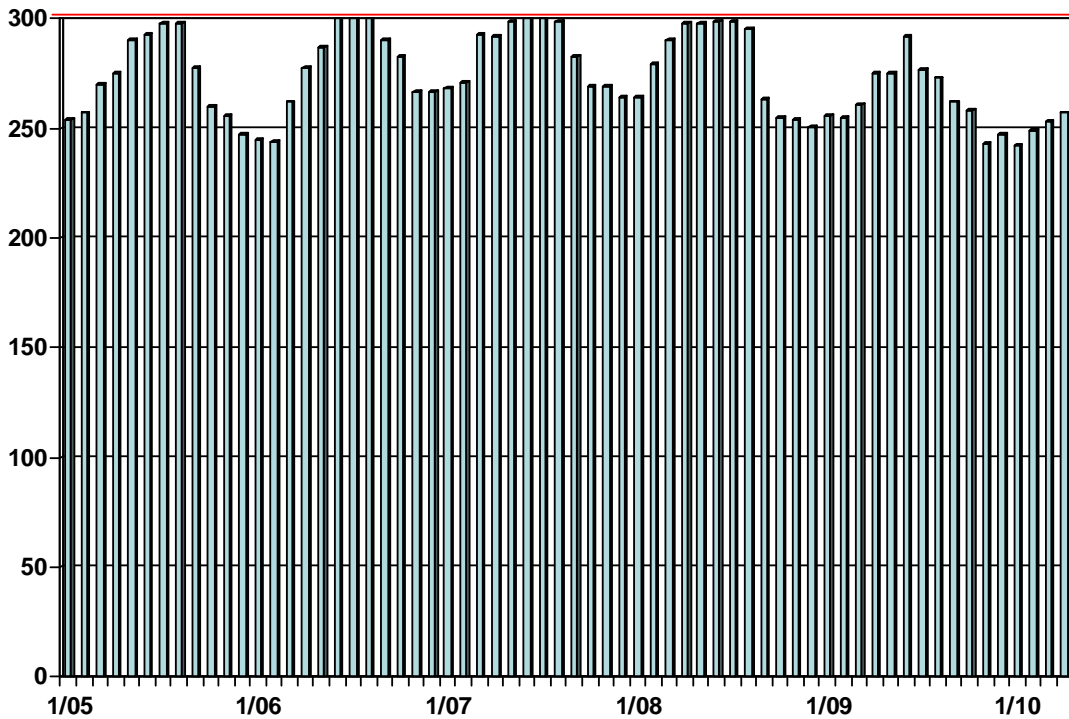


Year	Jan	Feb	Mar	April	May	June	July	Aug	Sept	Oct	Nov	Dec
2005	370	373	384	395	411	427	423	410	414	412	385	370
2006	371	368	378	393	408	397	392	386	378	363	358	347
2007	343	359	389	407	392	382	372	346	352	325	316	318
2008	313	328	348	376	360	356	358	342	320	321	305	302
2009	298	306	335	338	322	319	315	305	290	286	281	288
2010	292	293	315	346								

Port of Port Angeles

JWM Slip Occupancy

January 2005 – April 2010



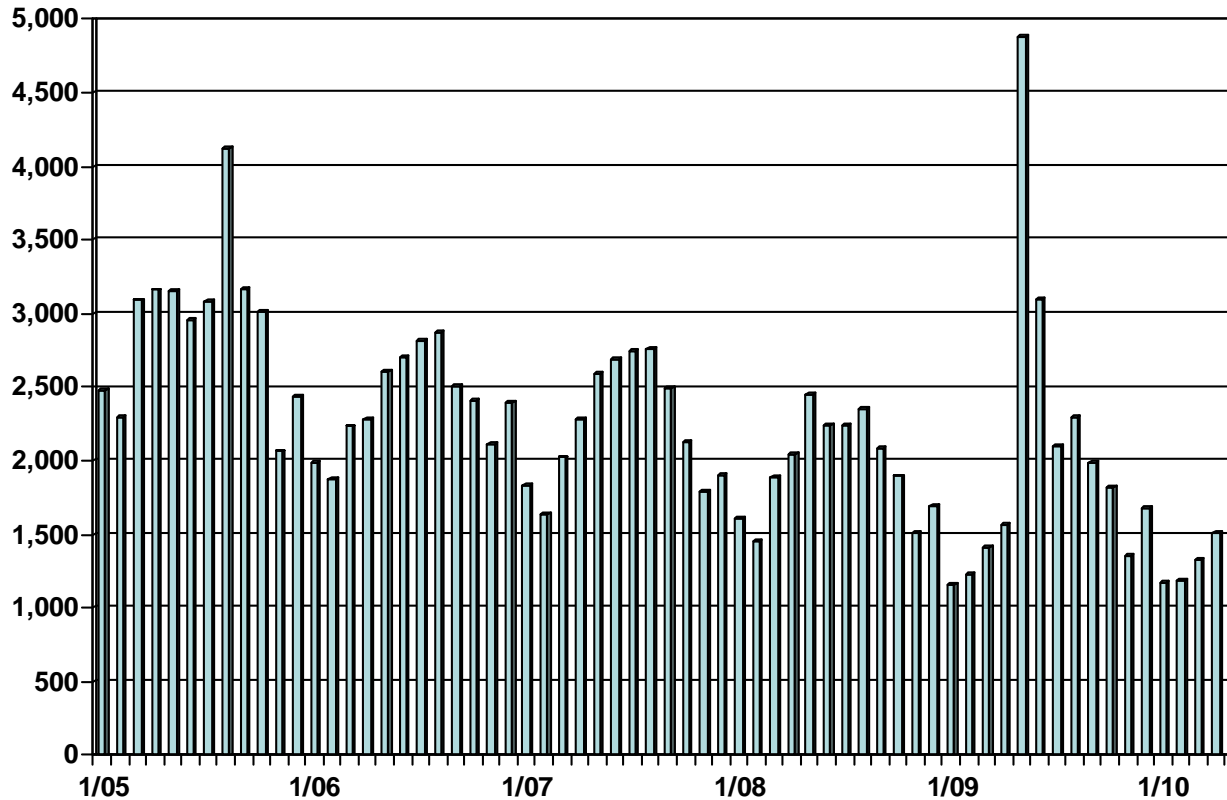
Maximum
Occupancy = 300

Year	Jan	Feb	Mar	April	May	June	July	Aug	Sept	Oct	Nov	Dec
2005	254	257	270	275	290	293	298	298	278	260	256	247
2006	245	244	262	278	287	300	300	300	290	283	267	267
2007	268	271	293	292	299	300	300	299	283	269	269	264
2008	264	279	290	298	298	299	299	295	263	255	254	251
2009	256	255	261	275	275	292	277	273	262	258	243	247
2010	242	249	253	257								

Port of Port Angeles

FIA Enplanements/Deplanements

January 2005 – April 2010



Year	Jan	Feb	Mar	April	May	June	July	Aug	Sept	Oct	Nov	Dec
2005	2,484	2,295	3,089	3,160	3,157	2,958	3,083	4,125	3,165	3,014	2,064	2,432
2006	1,988	1,873	2,233	2,284	2,609	2,701	2,810	2,871	2,503	2,405	2,116	2,394
2007	1,829	1,635	2,023	2,287	2,595	2,688	2,750	2,755	2,497	2,134	1,790	1,906
2008	1,609	1,459	1,895	2,047	2,451	2,245	2,244	2,358	2,086	1,897	1,508	1,691
2009	1,162	1,226	1,416	1,561	4,877	3,096	2,099	2,294	1,982	1,813	1,356	1,683
2010	1,169	1,186	1,324	1,506								

MEMORANDUM

DATE: 5/1/10
TO: Jeff Robb
FROM: Holly Hairell

RE: Reimbursable Days Summary for Commissioners April 2010

John Calhoun

YTD

4/1/10 Economic Summit
4/2/10 Economic Summit interviews
4/7/10 Forks Chamber meeting
4/9/10 Puget Sound Partnership meeting
4/12/10 Port Commission meeting
4/14/10 West End Business Association meeting
4/15/10 EDC Board meeting

38

George Schoenfeldt

4/6/10 PABA Speaker
4/8/10 NOTAC meeting
4/12/10 Port Commission meeting
4/15/10 Harborworks meeting
4/26/10 Port Commission meeting
4/28/10 Olympic Logging conference
4/29/10 Olympic Logging conference
4/30/10 Olympic Logging conference

42

Jim McEntire

4/1/10 EDC conference
4/8/10 Sequim Chamber Board and PDD meetings
4/12/10 Port Commission meeting
4/13/10 Sequim Chamber luncheon
4/15/10 Harborworks and PDD Staff meetings
4/19/10 Marine Resources Committee meeting
4/26/10 Port Commission meeting
4/27/10 Sequim Chamber luncheon
4/28/10 Port Security conference
4/29/10 Olympic Logging conference
4/30/10 Olympic Logging conference

43

Maximum number of compensated meeting days allowed each calendar year - Total 96.